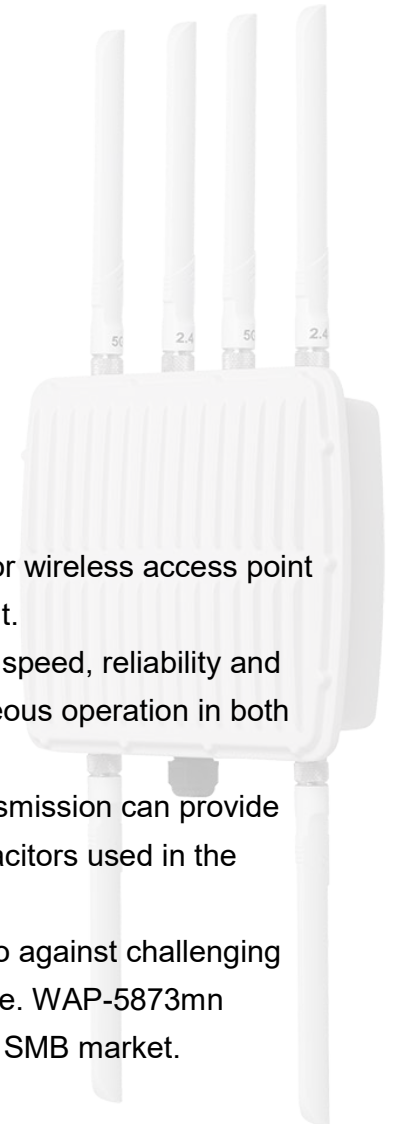


SMB WiFi

Outdoor | AC1750 Dual-Band
802.3at PoE | 3x3 MIMO | IP67

WAP-5873mn [WAP-EN1750R](#)



Comtrend WAP-5873mn is a highly-reliable industrial standard outdoor wireless access point designed to extend wireless network coverage in outdoor environment.

With the latest wireless 802.11ac technology for improvements in the speed, reliability and quality of wireless communications, WAP-5873mn provides simultaneous operation in both 2.4GHz and 5GHz wireless coverage for maximum flexibility.

Six detachable N-Type antennas with 27.5dBm maximum power transmission can provide larger wireless coverage for the business requirement. The solid capacitors used in the WAP-5873mn guarantees safety for long term usage.

With industrial standard IP67 rated enclosure, WAP-5873mn is able to against challenging outdoor weather conditions such as heavy rain, heat, snow and smoke. WAP-5873mn delivers reliable performance that will be the best commitment for the SMB market.

FEATURES

- **802.11AC Dual-Band High Speed:**
IEEE 802.11ac concurrent dual-band with 1750Mbps wireless speed.
- **Rugged Construction:**
IP67 weatherproof & dustproof housing and die-cast aluminum, corrosion resistant enclosure, salt, fog, rust ASTM B117 weather shield to survive the most challenging environments.
- **Designed for High Density Usage:**
Supports up to 100 users simultaneously, ideal for crowded environments and BYOD (Bring Your Own Device) workplaces.
- **Power Over Ethernet**
Supports IEEE 802.3at PoE
- **Easy Installation**
Wall-mount or pole-mounted design with easy installation kit.
- **Central Management**
Comtrend Network Management Suite (NMS), easy and intuitive central management tool, supports AP array architecture.

WAP-5873mn

Outdoor | AC1750 Dual-Band | 3x3 MIMO | 802.3at PoE | IP67

SPECIFICATIONS

HARDWARE

- MCU/RF: Qualcomm Atheros QCA9558(2.4GHz)+QCA9880(5GHz)
- Memory: 128 MB
- Flash: 16 MB
- Physical Interface: LAN : 1 x 10/100/1000 Gigabit Ethernet with 802.3at PoE support
3 LED + 1 Reset M25 interface
- Power Requirement: Power over Ethernet, IEEE 802.3at
- Antenna: External N-Type 2.4G 4dBi antenna x 3
External N-Type 5G 6dBi antenna x 3

RF

- Wireless Standard : IEEE 802.11 a/b/g/n/ac
- Frequency Band : Radio I: 802.11b/g/n 2.400~2.484(GHz)
Radio II: 802.11a/n/ac 5.150~5.250(GHz), 5.250~5.350(GHz), 5.470~5.725(GHz), 5.725~5.850(GHz)
- Operation Channels : 2.4GHz: US/Canada 1-11
2.4GHz: Europe 1-13
2.4GHz: Japan 1-14
5GHz: Support channel is restricted by local regulatory requirements:
36, 40, 44, 48, 52, 56, 60, 64, 100, 104, 108, 112, 116, 120, 124, 128, 132, 136, 140, 149, 153, 157, 161, 165

TRANSMIT POWER (Maximum power is limited by local regulation)

- | | |
|--|---|
| • 802.11b
23dBm@1Mbps
23dBm@11Mbps | • 802.11a
22dBm@6Mbps
18dBm@54Mbps |
| • 802.11g
23dBm@6Mbps
19dBm@54Mbps | • 802.11a/n(5G)
27.5dBm@MCS0/MCS8
22.5dBm@MCS7/MCS15 |
| • 802.11n(2.4G)
27.5dBm@MCS0 (HT20/40)
22.5dBm@MCS7 (HT20/40) | • 802.11ac
27.5dBm@MCS0
22.5dBm@MCS7
19.5dBm@MCS9 |

RECEIVER SENSITIVITY

- | | |
|---|---|
| • 802.11b
≤-93dBm@1Mbps
≤-90dBm@11Mbps | • 802.11a
≤-90dBm@6Mbps
≤-72dBm@54Mbps |
| • 802.11g
≤-90dBm@6Mbps
≤-74dBm@54Mbps | • 802.11a(n(5G))
≤-94.5dBm@MCS0
≤-70.5dBm@MCS7 |
| • 802.11gn(2.4G)
≤-94.5dBm@MCS0
≤-76.5dBm@MCS7
≤-90dBm@MCS8
≤-72dBm@MCS15 | • 802.11ac
≤-90dBm@MCS8
≤-66dBm@MCS15
• 802.11ac
≤-90.5dBm@MCS0
≤-60.5dBm@MCS9 |

SOFTWARE

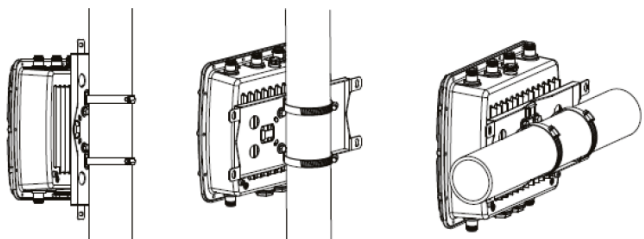
- Multiple BSSID: Total 32 (16 for 2.4GHz, 16 for 5GHz)
- VLANs : SSID and Ethernet port based tag/untag (VID = 1~4096)
- Wireless Mode : 11 a/11b/11g/11n/11ac
Channel selection (Setting varies by country)
Channel bandwidth (Auto, 20, 40, 80MHz)
Transmission Rate :
2.4GHz: 11b, 11g, 11b/g, 11g/n, 11b/g/n
5GHz: 11a, 11a/n, 11a/n/ac
- Pass-through : Support IPv6 and VPN Pass-through
- QoS : WMM
Max Associated Station Number
- WPS : Software
- Security : WEP Encryption – 64/128 bit
WPA Personal (WPA-PSK using TKIP or AES)
WPA Enterprise (WPA-EAP using TKIP or AES)
802.1x Authenticator : MD5/TLS/TTLS/PEAP
EAP-FAST, EAP-SIM, MAC Authentication
SSID Broadcast: enable / disable
256 WLAN MAC Address Filter
WLAN L2 isolation (AP mode)
Wireless STA (Client) connected list

MANAGEMENT

- Tx Power Control: Adjust power by 10, 25, 50, 75, 90, 100%
- Configuration: Web-based configuration
HTTP/HTTPS/SSH/CLI
- Firmware: Upgrade via WEB, CLI, TFTP and FTP
- SNMP: v1, v2c, v3. MIB II, IEEE802.11MIB, BridgeMIB, Interface MIB, Private MIB
- Auto-Channel: Automatically selecting lease congested channel
- Backup & Restore: Save & Restore settings through management interfaces
- CLI: Support Command Line Interface
- Power Saving: Support ARP Proxy for connected wireless client

ENVIRONMENT & PHYSICAL

- Temperature Range: Operation : -40 to 70°C (-40 to 158°F)
(Use Power Adapter) Storage : -40 to 80°C (-40 to 176°F)
- Certifications : FCC, CE
- Dimensions: 257mm(L) x 227mm(W) x 90mm(H)
- Weight: 2.98Kg



COMTREND CORPORATION

Taiwan:

3F-1, No.10, Lane 609, Chongxin Road, Section 5,
Sanzhong Dist., New Taipei City 24159, Taiwan
Tel: 886-2-2999-8261
Fax: 886-2-2999-8497

USA & Canada:

14 Chrysler, Irvine CA 92618, USA
Tel: 1-949-7539640
Fax: 1-949-7539020

Spain:

C/ Proción, 7 portal 2, 1º C - Edif. América II
28023 Madrid, Spain
Tel: 34-917990403

Czech Republic:

TOKOVO Jankovcova 1518/2, 170 00, Prague 7,
Czech Republic
Tel: 420-266-782040
Fax: 420-266-782990